



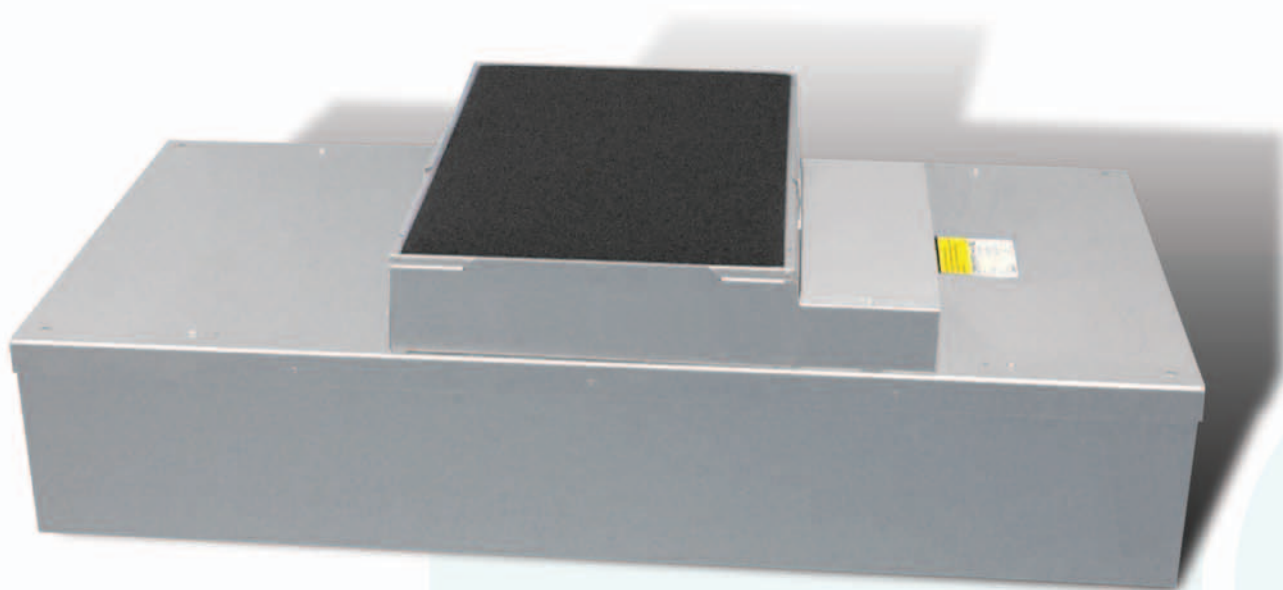
ENVIRCO

Innovators in clean air technology

MAC 10 Original

MAC 10 Original

Extra-Low Fan Filter Unit



MAC 10 Original

Extra low watts, extra low sound, extra low profile.

As the newest addition to Enviroco's MAC 10 Fan Filter Unit (FFU) family, the MAC 10 Original is the only FFU combining low sound, low watts and a low profile. Measuring only 50 dBA, the MAC 10 Original Standard (2 ft x 4 ft [600 mm x 1,210 mm]) provides one of the lowest sound levels of any FFU in the industry. Running at only 200 watts @90 FPM (.45 m/s [175 Watts for 220V/50 Hz]), the unit uses less energy than traditional FFUs, lowering operating costs. The MAC 10 Original maintains a low profile, measuring less than 13 in. (330 mm).



STANDARD FEATURES

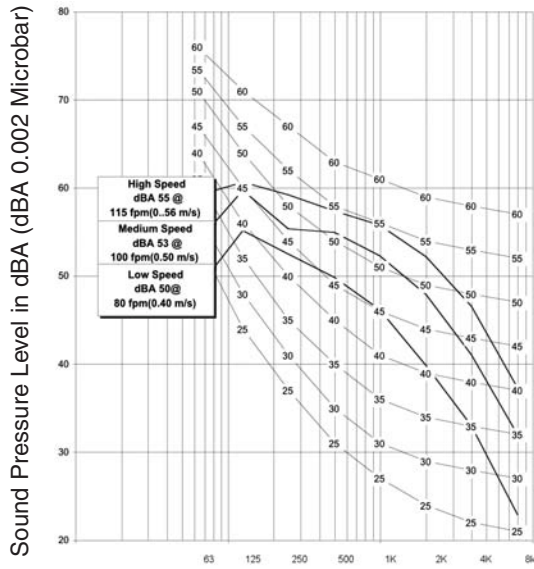
- Low Sound, Low Watts, Low Profile and Low Operating Costs
- Three Speed Switch features low, medium and high settings; standard on all 2 ft x 4 ft (600 mm x 1,210 mm) and 2 ft x 3.5 ft (600 mm x 1,057 mm) units
- Solid-State Speed Control standard on 2 ft x 2 ft (600 mm x 600 mm) and 2 ft x 3 ft (600 mm x 905 mm) units
- High Efficiency Particulate Air (HEPA) Filter: 99.99% efficient @ 0.3 micron
- Snap-In Prefilter allows for easy replacement and maintenance
- 0.4 in wg (100 Pa) External Static Capability at 90 ft/min (0.45 m/s) with HEPA Filter
- Walkable Plenum (excluding prefilter)
- Meets IEST recommended practices
- UL listed (120 V, 240 V, 277 V)

OPTIONS

- Solid-State Speed Control: available on 2 ft x 4 ft (600 mm x 1,210 mm) and 2 ft x 3.5 ft (600 mm x 1,057 mm) units; allows for a full range of settings
- Room-Side Replacement (RSR) available with gel seal filter element (RSR and RSRE models)
- Ultra Low Penetration Air (ULPA) Filter: 99.9995% efficient @ 0.12 micron
- Airflow Indicator Light allows external monitoring of unit operation
- CE Marked: 230V units available
- A/C Collar (12 in [305 mm] diameter) allows direct connection to the air conditioning supply
- Fluorescent Light provides illumination with minimal airflow disruption
- Ion Bar neutralizes static charges below the filter
- Exterior: available powder coat painted or stainless steel
- Power Cord provides convenient plug-in connection for non-permanent applications (non-UL)
- Challenge Port offers convenient aerosol challenge and filter testing
- Knife Edge permits easy placement in gel track ceiling grid system
- Custom Sizes and Configurations available: perfect for mini-environment applications
- Metric Sizes available

Sound Curve

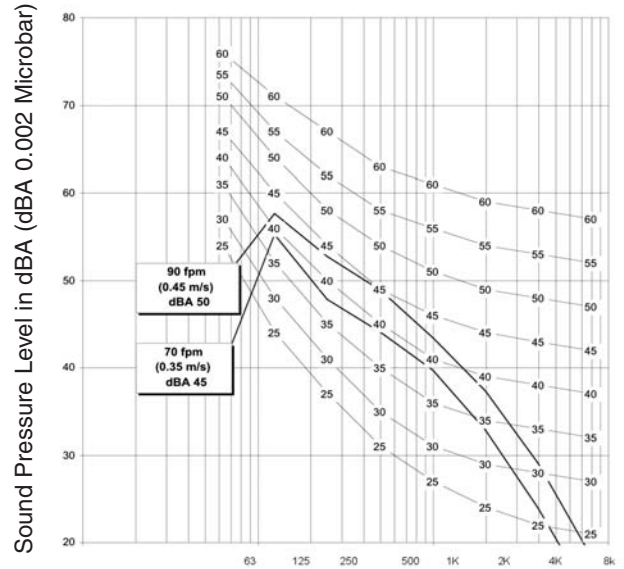
HIGH, MEDIUM AND LOW SPEED DATA
2 ft x 4 ft (600 mm x 1,210 mm)
MAC 10 Original Standard HEPA Filter



Octave-Band Center Frequencies (Hz)
Sound measured at 30 in (762 mm) from filter face;
Data applies to all unit voltages.

Sound Curve

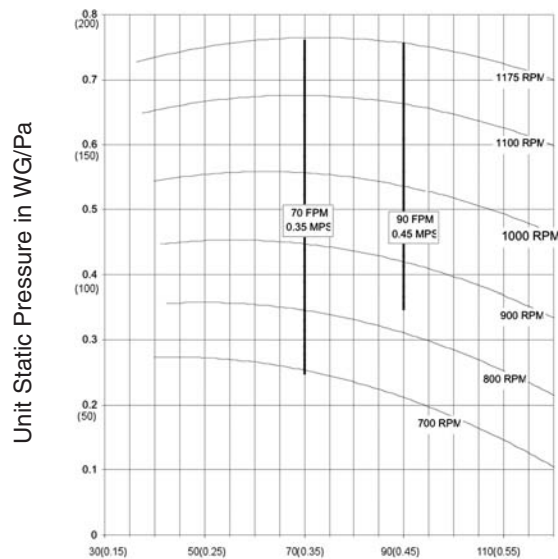
90 ft/min (0.45 m/s) and 70 ft/min (0.35m/s)
2 ft x 4 ft (600 mm x 1,210 mm)
MAC 10 Original HEPA Filter



Octave-Band Center Frequencies (Hz)
Sound measured at 30 in (762 mm) from filter face;
Data applies to all unit voltages.

Fan Curve

2 ft x 4 ft (600 mm x 1,210 mm)
MAC 10 Original Standard HEPA Filter
60 Hz Data



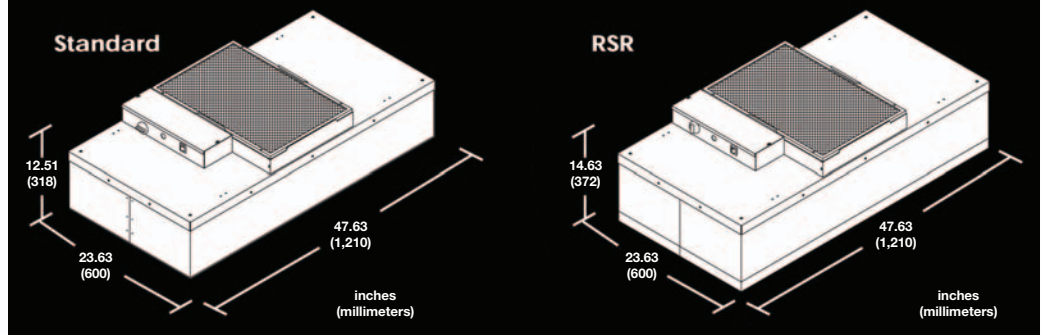
Airflow ft/min (m/s)

Airflow measured with Velgrid with a 6 in (152 mm) standoffs
and eight readings across filter face; applies to all voltages.
Measured with solid-state speed control.

Dimensions

inches (millimeters)

2 ft x 2ft	23.63 x 23.63	(600 x 600)
2 ft x 3 ft	23.63 x 35.63	(600 x 905)
2 ft x 3.5 ft	23.63 x 41.63	(600 x 1,057)
2 ft x 4 ft	23.63 x 47.63	(600 x 1,210)



MAC 10 Original HEPA Model, 1/5 Hp Motor	AVERAGE AIRFLOW ft ³ /min (m ³ /hr)	HIGH SPEED	MEDIUM SPEED	LOW SPEED	90 ft/min	70 ft/min	WATTS 60 Hz (50 Hz)**	SENSIBLE HEAT (BTUH) 60 Hz @ 90 fpm (50 Hz @ 0.45 m/s)	SENSIBLE HEAT (BTUH) 60 Hz @ full load (50 Hz @ full load)	UNIT WEIGHT lbs (kg)
		120V, 220V, 277V/ 60 Hz (Airflow/Watts)	120V, 220V, 277V/ 60 Hz (Airflow/Watts)	120V, 220V, 277V/ 60 Hz (Airflow/Watts)	120V, 220V, 277V/ 60 Hz (Airflow/Watts)	120V, 220V, 277V/ 60 Hz (Airflow/Watts)				

Standard (STD) Model

Dimensions	Average Airflow	High Speed	Medium Speed	Low Speed	90 ft/min	70 ft/min	Watts	Sensible Heat	Sensible Heat	Unit Weight
2 ft x 4 ft 600mm x 1,210 mm	650 (1,105)	115/270	100/230	80/190	90/200	70/180	200 (180)	683 (615)	922 (829)	66 (29.94)
2 ft x 3.5 ft 600mm x 1,057 mm	560 (952)	130/270	115/230	90/190	90/189	70/164	189 (170)	645 (581)	922 (829)	63 (28.58)
2 ft x 3 ft 600mm x 905 mm	480 (816)	150/270			90/163	70/142	163 (147)	556 (501)	922 (829)	52 (23.59)
2 ft x 2 ft 600mm x 600 mm	360 (612)	230/270			90/120		120 (108)	410 (369)	922 (829)	41 (18.6)

Room-Side Replaceable (RSR) Model

Dimensions	Average Airflow	High Speed	Medium Speed	Low Speed	90 ft/min	70 ft/min	Watts	Sensible Heat	Sensible Heat	Unit Weight
2 ft x 4 ft 600mm x 1210 mm	650 (1,105)	105/270	90/230	70/190	90/220	70/160	220(198)	751 (676)	922 (829)	71 (32.31)
2 ft x 3.5 ft 600mm x 1057 mm	560 (952)	120/270	105/230	80/190	90/180	70/160	180(162)	614 (553)	922 (829)	68 (30.84)
2 ft x 3 ft 600mm x 905 mm	480 (816)	135/270			90/168	70/150	168(151)	573 (517)	922 (829)	54 (24.49)
2 ft x 2 ft 600mm x 600 mm	360 (612)	145/270			90/130	70/120	130(117)	444 (400)	922 (829)	44 (19.96)

Full-Load Amp 120 V / 60 Hz / 1 Ph = 3.0; 220 V / 50/60 Hz / 1 Ph = 1.5; 277 V / 60 Hz / 1 Ph = 1.2

**All test data is measured at 90 ft/min (0.45 m/s). Test Data for the 2 ft x 4 ft (600 mm x 1,210 mm) and 2 ft x 3.5 ft (600 mm x 1,058 mm) measured at 90 ft/min (0.45 m/s) with optional Speed Control; 2 ft x 3 ft (600 mm x 905 mm) and 2 ft x 2 ft (600 mm x 600 mm) units are standard with Speed Control. Test data taken with an electronic micromanometer with Velgrid attachment; eight readings in unloaded conditions. Measurement with two velgrid readings centered on each half of the 2x4 filter gives readings equal to the eight readings.